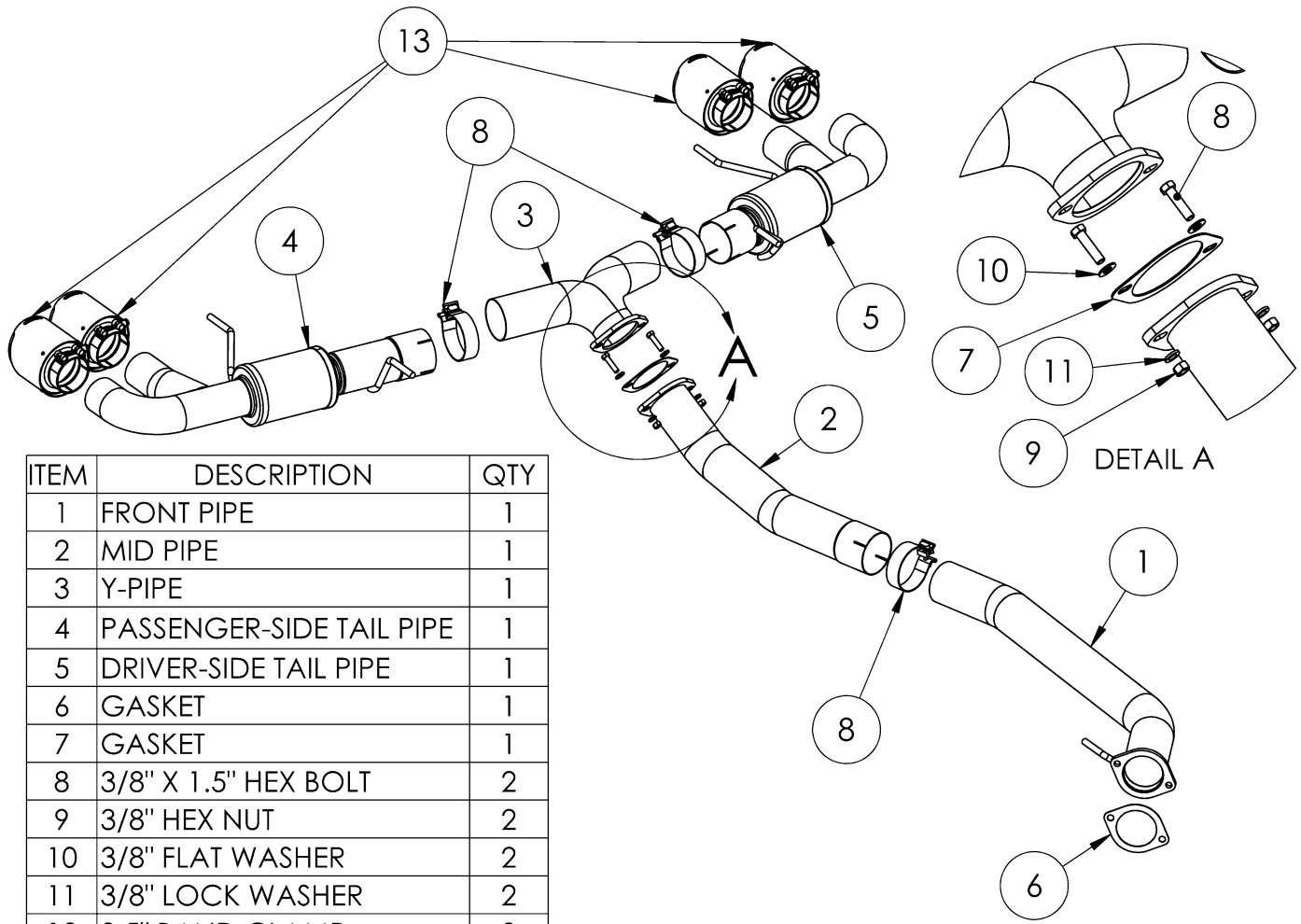


S4407

2009-2024 NISSAN GTR, 3.8L, CAT-BACK,
3.5" DUAL SPLIT REAR, QUAD TIPS (VEHICLES
EQUIPPED WITH FACTORY ACTIVE EXHAUST
MAY REQUIRE TUNING)

MBRP®



ITEM	DESCRIPTION	QTY
1	FRONT PIPE	1
2	MID PIPE	1
3	Y-PIPE	1
4	PASSENGER-SIDE TAIL PIPE	1
5	DRIVER-SIDE TAIL PIPE	1
6	GASKET	1
7	GASKET	1
8	3/8" X 1.5" HEX BOLT	2
9	3/8" HEX NUT	2
10	3/8" FLAT WASHER	2
11	3/8" LOCK WASHER	2
12	3.5" BAND CLAMP	3
13	TIP	4

Refer to this LOT NUMBER when contacting customer service: _____

PLEASE READ BEFORE STARTING INSTALLATION

While MBRP has made every effort to ensure that all components of this system are of superior quality and properly packaged, it is the installer's responsibility to ensure the following before removal of the factory exhaust:

- that ALL components shown above are present.
- that ALL mating components fit together.
- that there are no damaged components.
- that the system you have purchased is appropriate for your vehicle year, model and configuration.
- that the system will not interfere with any modifications previously installed or planned.
- that you have read and understand these instructions.

If you have any questions or are uncertain about any aspect of the installation of this system to your vehicle please contact your dealer before commencing installation.

MBRP

Removal of Stock System



Figure 1

1. Apply penetrating lubricant liberally to all exhaust fasteners, hangers, and rubber insulators.

2. Remove the center underbody cover (22 bolts and 5 push pins). Some vehicles are equipped with a light in this section, ensure to unplug after all hardware has been removed.

Refer to Figure 1.



Figure 2

3. Remove the side covers located forward of the exhaust outlets (3 bolts and 3 push pins each)

Refer to Figure 2.

4. Remove center underbody cover mounting bracket (4) bolts.

Refer to Figure 3.



Figure 3

5. Remove factory exhaust tips.

Refer to Figure 4.

6. Unplug the valve actuator connector if applicable.

7. Remove the (4) bolts retaining the underbody cover located near the factory cat back connection

Refer to Figure 5.



Figure 4

8. Disconnect all hanger brackets from the vehicle and remove the factory exhaust. Retain hanger brackets and hardware for re-installation. Take note of where each hanger bracket was located.



Figure 5

MBRP

Installation of MBRP Performance Exhaust



Figure 6

1. Attach the **Front Pipe** with the **Gasket** that matches the front flange, to the factory flange.

Refer to **Figure 6**.

2. Assemble the **Y-Pipe**, **Passenger-Side Tail Pipe** and **Driver-Side Tail Pipe** with **3.5" Band Clamps**. Do not tighten clamps. Install all the hanger brackets in the appropriate location onto each hanger.

Refer to **Figure 7** and **Page 1**.



Figure 7

3. Lift and mount the assembly into position, leading with the tails into the factory fascia holes. Secure the factory hanger brackets with the factory hardware.

Refer to **Figure 8**.

4. Install the **Mid Pipe** with a **3.5" Band Clamp** onto the **Front Pipe** and rotate to line up with the **Y-Pipe**. Mount to the **Y-Pipe** using the **Gasket** and the **3/8" Hardware**. To get the clamp into the correct position it will be necessary to remove the bolt mounting the undercover.

Refer to **Figure 9 & 10**.



Figure 8



Figure 9

MBRP



Figure 10



Figure 11

5. Install the **Tips**. Do not tighten yet.

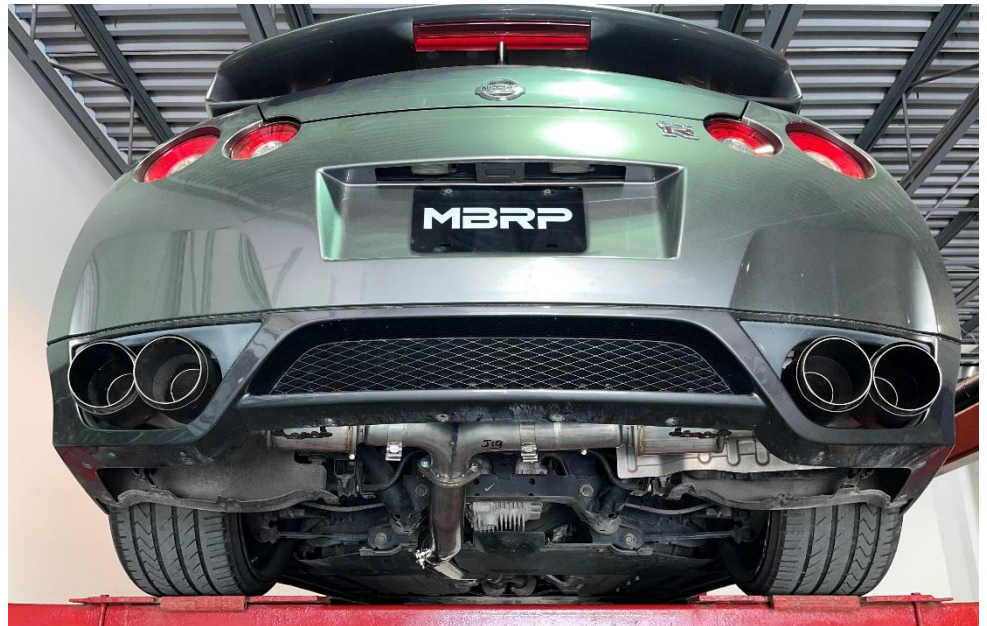
Refer to Figure 11.

6. Carefully align all parts of the system to achieve the best possible fit with the **Tips** centered in the fascia.

7. Carefully align the system and tips. Align the edge of each band clamp with the edge of the joint it is connecting. Tighten all hardware and clamps, starting at the front and working rearward to secure the system. Check along the full length of the exhaust system to ensure there is adequate clearance for fuel lines, vent lines, brake lines, frame, bodywork, suspension and any wiring, etc. If there is any interference detected, relocate or adjust to provide adequate clearance. Ensure all clamp connections are secure and components are unable to rotate or slide. Band clamps require approximately 45 lb-ft (60 N-m) of torque.

8. Re-install all previously removed covers, bolts and electrical (if applicable).

9. Verify clearances, system security and band clamp torque after 30-60 miles (50-100 km) of driving.



Congratulations! You are ready to begin experiencing the improved power, sound and driving experience of your **MBRP** Performance Exhaust. We know you will enjoy your purchase!